

NOVEMBER 1989

THE ROCKFINDER



ED MILLER, EDITOR
MICHIANA GEM & MINERAL SOCIETY
114 E. LOGAN ST.
ARGOS, INDIANA 46501



FIRST CLASS MAIL

LARSON, JOYCE
144 Spruce Drive
Westville, IN 46391



MICHIANA GEM AND MINERAL SOCIETY

1989 Board of Directors

President....Margaret Heinek	Rt. 3, Box 370E, New Carlisle, In. 46552
Vice Pres....Bob Miller	1106 Clayton Dr., South Bend, In. 46614
Secretary....Marie Crull	17651 Bryan St., South Bend, In., 46635
Treasurer...Christine Shoemaker	17650 Briarcliff Ct., So. Bend, In. 46635
Liaison.....Stanley Kile	3313 S. Whitcomb Ave., So. Bend, 46614
Past Pres....James Russell	27911 North St., No. Liberty, In. 46554

COMMITTEE CHAIRPERSONS

Program.....Bob Miller	1106 Clayton Dr., South Bend, In. 46614
Hospitality..Jessica Zeiger	11923 McKinley, Mishawaka, In. 46545
Educational..	
Librarian....Paul Godollei	1910 Ribourde Dr., South Bend, In. 46628
Historian....Bess Wise	1513 Clarendon Ave., Niles, Mi. 49120
Field Trips..Board of Directors	
Safety.....	
Sunshine.....Kathy Miller	1106 Clayton Dr., South Bend, In. 46614
Scholarship..Catherine Biek	1111 N. Huey St., South Bend, In. 46628
Display.....	
Publicity....Charlotte Young	903 S. Logan St., Mishawaka, In. 46544
Membership...Members and Board of Directors	

The MICHIANA GEM AND MINERAL SOCIETY, a non-profit organization, is affiliated with the MIDWEST FEDERATION OF MINERALOGICAL AND GEOLOGICAL SOCIETIES and with the AMERICAN FEDERATION OF MINERALOGICAL SOCIETIES.

REGULAR MEETINGS

Time: 2:00 PM EST	Place: WESTMINSTER PRESBYTERIAN CHURCH
Fourth Sunday of each month	1501 W. Cleveland Road
June-Field trip meeting	SOUTH BEND, IN.
July-No meeting	West of the St. Joe River
August-Annual picnic	

DUES

Individual	\$ 6.50 per year
Family	10.00 per year
Junior	2.00 per year

ROCKFINDER STAFF

Editor.....Ed Miller	114 E. Logan St, Argos, In. 46501
Staff.....Club members	

All contributions for publication should be in the hands of the editor by the 10th of each month.

Permission is hereby granted to reprint, at any time, items published in the ROCKFINDER, provided due recognition is given.

THE ROCKFINDER

VOLUME 29

NUMBER 9

NOVEMBER 1989

PUBLISHED BY: MICHIANA GEM AND MINERAL SOCIETY INC.

SOUTH BEND, IN.

REGULAR MEETING:

SUNDAY NOVEMBER 26, 1989

TIME: DOORS OPEN 1:30
MEETING 2:00

PLACE: WESTMINSTER PRESBYTERIAN CHURCH
1501 W. CLEVELAND ROAD
WEST OF THE ST. JOSEPH RIVER
SOUTH BEND, IN.

PROGRAM: BUSINESS MEETING

We are in for what looks like another very interesting program this month. Bob and Kathy are going to speak to us about diamonds, crystals, and geodes.

The Millers have returned from a trip to Arkansas to look for diamonds and crystals. I am looking forward to this program because I have always wanted to go to that area to look for the quartz.

HOSPITALITY:

These names were omitted as hostesses last month:

JOSEPHINE KYTTA
JOAN ROSBACK
PAULINE KELSHEIMER

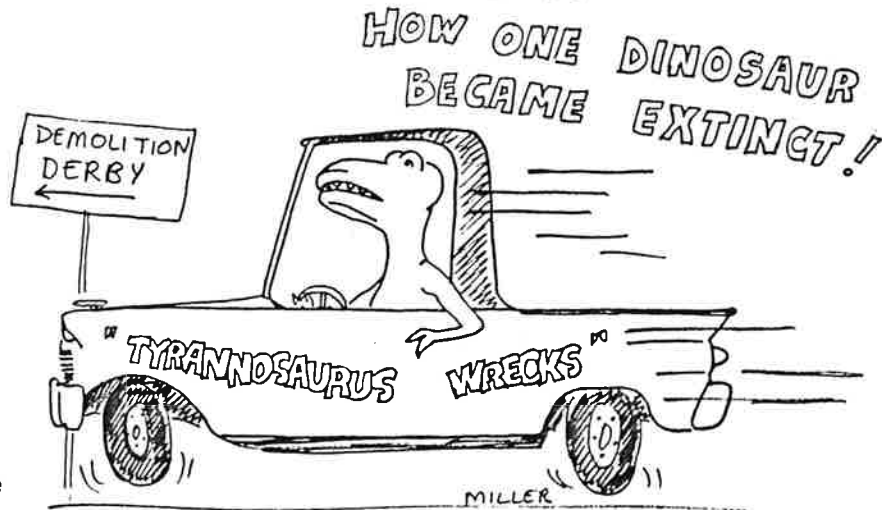
This month:

CHRISTINE SHOEMAKER
JESSICA ZEIGER
ED MILLER

COMING EVENTS:

NOV. 24-26

Geodon Gems Shows, Inc.
DuPage County Fairgrounds
2015 W. Manchester Road
Wheaton, IL.

COMING EVENTS CONTINUED:

DEC. 1-3 The Great American Gem, Mineral, & Jewelry Show
Recreation Center
Maumee, Oh.

DEC. 8-10
International Gem and Jewelry Show
O'Hare Expo Center
Chicago, Il.

DEC. 10 Michiana Gem and Mineral Society Christmas Party
Westminster Presbyterian Church
1501 W. Cleveland Road
1:00 PM
(Bring a salad, hot dish, or dessert
1 dish for each 2 in your family.
Bring your own table service and
cup or glass.
Club will furnish the meat, rolls,
butter, and beverage).

DEC. 15-17

Great American Gem, Mineral, and Jewelry Show
Special Christmas Gift Show
Cleveland, Oh.

MARGARET'S COLUMN

INDIANA ROCKS, MINERALS, & FOSSILS pt. 11

Here it is November all ready! The year has gone so fast and it has been a very busy year for some of us. We have lost one of our long time members, some have retired while others have moved away. But we have gotten several new members. Hurray! It is nice to see so many of the members and to greet those that are new in the club. We look forward to more joining.

Our show was a success, and I know our bus trip will be fun.

This month Kathy and Bob Miller will present a program on their crystal and diamond hunt they took this fall. Should be interesting! Bob, as V-Pres. will present the slate of officers nominated for 1990. Additional nominations may be made from the floor, with the permission of those nominated. So come and vote.

As you probably know by now, the Michiana Gem Society will host the 1991 Midwest Federation show and convention. It will be a 3 day show and will be held on our regular show dates, Labor Day weekend, August 30 - September 1, 1991. It is early, but we must have a budget and plans made and committees formed soon. You as members might be thinking about what area you would like to work in and how you want to display, competitive or non-competitive.

Our Christmas party will be held on December 10th at 1 PM at the Westminster Church. It will be a pot luck with the club furnishing the meat, rolls, butter and beverages. You are to bring a salad, hot dish or dessert to share. One dish for each 2 people in your family. Bring your own table service, plates, silver, cups (in other words "eating tools") and your appetite. The club has GOOD cooks!

See you at the November meeting, bring a friend who would like to see where crystals come from.

Margaret

FORAMINIFERA

These are marine protozoans that secrete a shell called a test. They thrived during Pennsylvanian, Cretaceous, and Tertiary time, and their tests are abundant in the strata of these ages.

The foraminifera's size is less than half a millimeter which means you will need a microscope to study them. These fossils are useful to petroleum geologists because they can be of assistance in locating oil.

The test or shell is usually composed of calcareous material.



Funeral Service Poem
by Lucy Miller

At the October meeting, Margaret read a poem that was written by Lucy Miller and intended to be read at her funeral. I was so impressed by her words I asked for permission to print the poem in the Rockfinder. This is for you Lucy!

Dear God, please take me by the hand,
And lead me to the promised land.
I've traveled extensively here below,
But now, I don't know where to go.
Forgive my sins, make me pure,
All things are possible with you, I'm sure.
I trust my life's not been in vain,
And a few worthy things I did attain.
A member of the Methodist Church here,
With various offices I held dear.
Though now my body at last is dead,
Shed no tears, just smile instead.
Though I loved my friends here,
Up there, I'll hold you just as dear.
I find it's time to say "Adieu",
Hopefully I'll be there to welcome you.
God reaps his harvest, as you know,
So be prepared, when called to go.

MINTUES OF THE OCTOBER 23, 1989
MICHIANA GEM AND MINERAL SOCIETY.

President Heinek opened the meeting at 2:05 P.M. President Heinek ask for a motion to accept the minutes as printed in the ROCKFINDER. Mary Miller made a motion, seconded by Bob Miller. Margaret introduced our new members Kenneth, Jennifer, Jenna and Kendra Jones.

Hostess for October were: Josephine Kytta, Pauline Kelsheimer and Nina Hassler.

Chris Shoemaker ask if anyone needs a name tag to see her after the meeting.

Program was presented by Bob & Margaret Heinek on there trip out west. They showed slides and had picture for display. This was a very nice program.

Margaret read a letter from Lucy Miller's daughter and a poem which Lucy had written before she died.

The field trip to Chicago will be November 12. The bus will load at 7:30 A.M., at the 1st Source Bank, corner of Cleveland & U. S. 31 North, leave at 7:45 sharp and return back in the evening at 7:00 P.M. You may take a sack lunch or there is a McDonalds there. We will stop on the way home for supper.

October birthdays are Irene Unqurait, Charlotte Erickson, Rob Heinek, Dave Darrow, Pat Fosbaugh, Nina Hassler, Lorraine Crum, and Diane Bowman.
Anniversaries for October: Bob & Kathy Miller, Dell & Tess Miller.

Mary Miller, Bob & Margaret Heinek brought displays.

Ed Miller is doing a great job on the ROCKFINDER.

Joe Fashbaugh wants to purchase cases with glass for displaying. Please see Joe if you have any for sale.

Margaret & Bob talked to three schools in the past couple of weeks.

Bob Miller presented the slate for 1990: President Margaret Heinek, Vice President Bob Miller, Treasurer Chris Shoemaker and Secretary Marie Crull. The members will vote next month so be sure and attend the meeting.

Margaret & Bob Heinek went to the Midwest Federation Meeting in Springfield, Mo. as did Kathy & Bob Miller. The 1990 show will be at Century Center on Labor Day weekend. The Michiana Gem and Mineral Society will host the 1991 Midwest Show, a 3 day show, August 30, 31 and September 1, 1991. Show Chairman will be Margaret Heinek.

Gordon Dobecki reported on his classes he gives. New classes will begin after Thanksgiving.

Bill Crull read a letter from Geodon for the good show held this past September.

Door Prizes went to Kim Young, Aaron Young and Jenna Jones for the Junior members. Mark Fowler, Marie Crull, Dick Scherer and Molly Elwell received prizes for the adults.

Our Christmas Party will be held at the church. Futher information next month. Margaret ask for a donation to the church of \$50.00 which was seconded by Bill Crull. This will be done next month.

Guests were: Mark Fowler, Mandy Green, Margaret Schultz and Warren Huntsinger. Attendance totaled, Adults 40, Junior Members 3, Guest 4.

Respectfully Submitted,

Marie Crull, Secretary

* * * * *

Why is it we drive on a parkway,
and we park on a driveway?

SUNSHINE REPORT



meeting, and our Christmas party.

Has anyone seen a turkey in a tree?! The holiday season is upon us and what a way to begin it, with a field trip, club



Just a **NOTE**...

The fall meetings have been so well attended. Perhaps it would be a good idea for each of us to wear our club vests at future meetings for the benefit of new members and guests. In fact, with our club hosting the Midwest Federation show/convention in 1991, a new logo/patch should be made up and more club vests made.

In Memory Of... May our prayers and sympathy be extended to Addie Niebauer in the passing of her brother from life to Life on October 22.

KEEP IN YOUR THOUGHTS AND PRAYERS



- Gertrude Orrell for a speedy recovery, Gertrude was recently hospitalized.
- Vivian Finley who is ill at home. (If anyone wishes to send Vivian a card, her address is==2234 Maple Lane, Niles, Michigan 49120.



Can't wait to hear from Jessie Zeiger. Did you know she went to Egypt this fall. We hope Jessie will be able to share some of her experiences with us.

Another member, Marilyn Meier recently spent three weeks touring France, Scotland, Wales and Rome, although not in that order. I know some "rockhounding" was involved. How bout an article Marilyn? I know all the club members would enjoy reading it.

BIRTHDAYS

Celebrating birthdays during November:

- 8 - Tom McLaughlin
- 10 - Kimberly Young
- 14 - Bob Miller
- 23 - Fred Baker
- 27 - Bess Wise

ANNIVERSARIES

Anniversay Best Wishes:
26 - Charlotte & Ralph Young

HAPPY THANKSGIVING AND -
Keep Smilin'

Kathy

Did you know ?

Scientists believe they have found a crater left by a gigantic meteor that hit the Earth millions of years ago, triggering the death of the dinosaurs. Authorities think this might be the answer to the controversy about the mass extinction of life 65 million years ago.

This crater is at least twice as big as any other found on Earth. It's about 180 miles from one side of the circular crater to the other and it is buried under more than a mile of ocean sediment. The approximate location is in the Caribbean Sea off the coast of Colombia.

Scientists studied pieces of the Earth's crust from Haiti and the Caribbean and maps of the geology of the ocean bottom of the region. They were looking into the theory that a huge meteor or meteors hit the planet at the end of the Cretaceous Period. The blast might have created a dense cloud that blocked the sun's life-giving rays causing the extinction of many plants and animals.

While studying Haiti, scientists found what appears to be a 20 inch thick layer of material that may have been thrown out of the crater. The huge crater buried beneath sediments was revealed by geological maps of the ocean bottom. The maps are created by sending signals through the ocean floor and measuring the time it takes for them to return.

Don't forget the Christmas party to be held at the Westminster Presbyterian Church on Sunday December the 10th. For those of you who have never attended this "bash", you are missing a fun time. The food is great and the fellowship makes it a really great time. If you can be there notify Marie Crull.

Fossil Collecting : by Paul Godollei, club member.

When going on a field trip to collect fossils, it would be a good idea to take a pocket magnifying glass along—some of the best fossils in my collection are very small. If something you pick up has unusual or unfamiliar items embedded in it, take out the magnifier and take a look—you might find a rare or unusual specimen. Don't discard a fossil because it is broken—keep it until you find a better one of the same species.

When you are cleaning your specimens it is a good idea to look the whole rock over—sometimes the rock you picked up for a particular specimen may have other specimens in it more rare – or might just have been overlooked. Actually, some of my best rare fossil specimens were collected that way! Many specimens in museums are not of a complete specimen either— the whole thing has never been found!

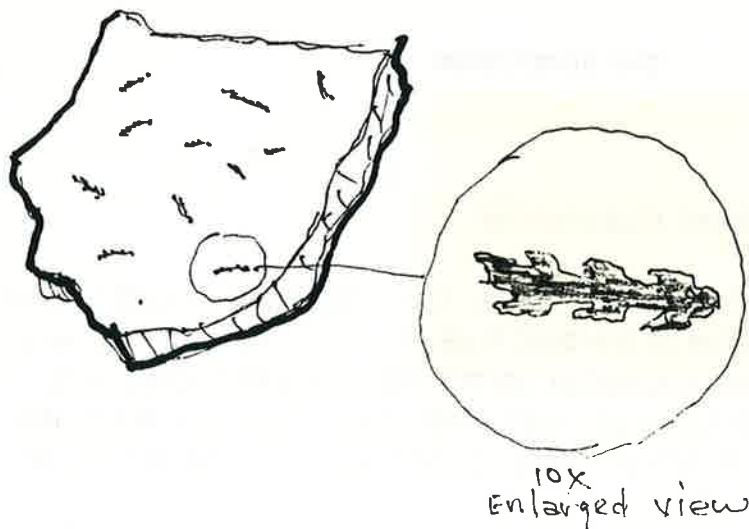
Here are a couple of examples— along the ditches about 20 miles into Kentucky across from Cincinnati, Ohio I found some slabs with "Lace Collar" trilobite parts in it— the frontal portion of *Cryolithis tessellatus* Green of Middle Ordovician age. When I cleaned the mud off the specimens at home and turned the slabs over, I found some tiny black streaks on the back that turned out to be specimens of the graptolite *Climacograptus typicalis*. These creatures floated in the ocean – in clusters or individually. When magnified, they look like tiny black saw blades.

There are many species of fossils that attached themselves to other species. Examples of this are the small Bryozoa that attached themselves to brachiopods and grew on them—Some of the *Spirifer* shells you collected at the Silica shale may have specimens of *Hederella* growing on them. You might also find some *Peptania* growing on a cephalopod cast. They look like cross stitched threads.

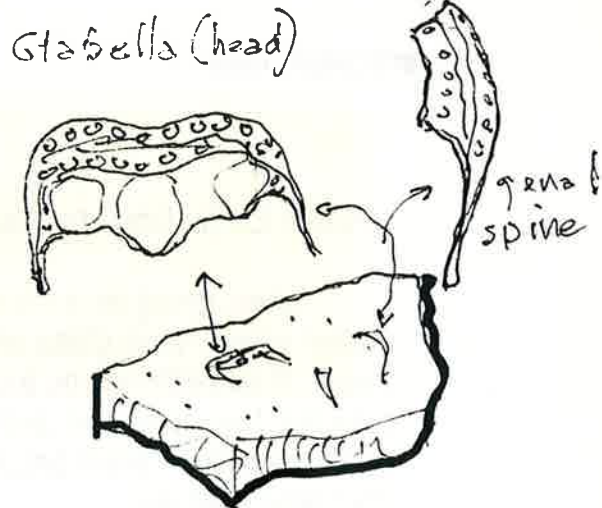
Inarticulate brachiopods were small specimens that attached themselves to other brachiopods.—You may find a small *Cranellia* attached to a *Spirifer* shell. If you look closely. They were flat and oval-shaped, about 8 or 9 mm across. The area surrounding the mouth of a trilobite is sometimes found—I have specimens as small as a BB and one three inches across— they look a little like a letter "U". They are called the Hypostoma. Sometimes you will only find the free cheek, pygidium (tail) or glabella (head) of a trilobite—you can find out a lot about them in Thomas Johnson's book "Trilobites".

Remember—look your specimens over with a magnifying glass— you may find a thrilling surprise.!

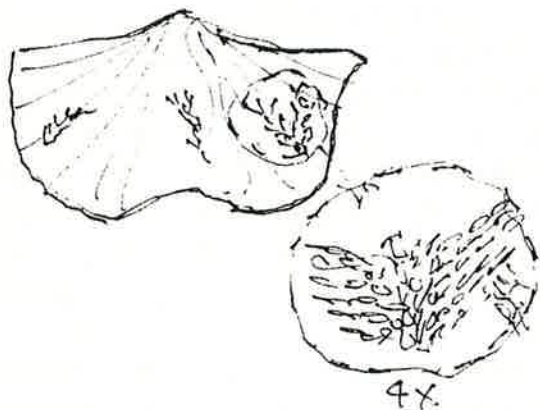
BIBLIOGRAPHY: Shimer & Shrock—"Index Fossils of North America."
Stewart—"Fauna of the Silica Shale of Lucas County "(Ohio
Thomas T. Johnson—"Trilobites—How to Find, Prepare and Photograph Trilobites."
Ricardo Levi-Setti—"Trilobites- A Photographic Atlas."



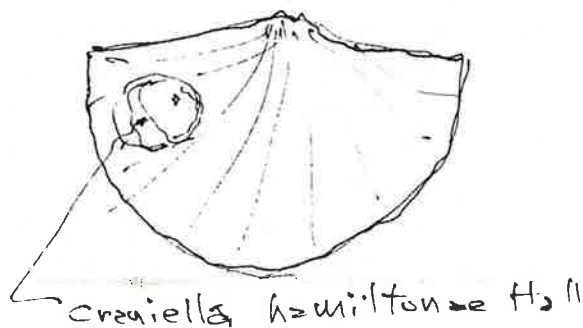
GRAPTOLITE- Climacograptus typicalis



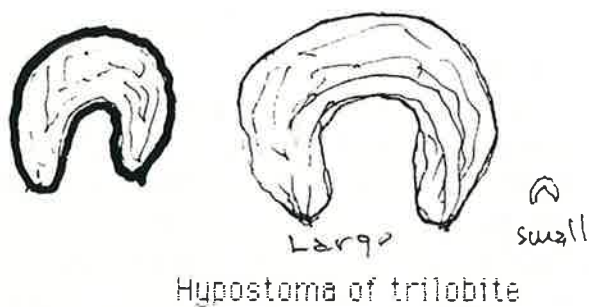
Lace Collar trilobite
Cryptolithis tessellatus



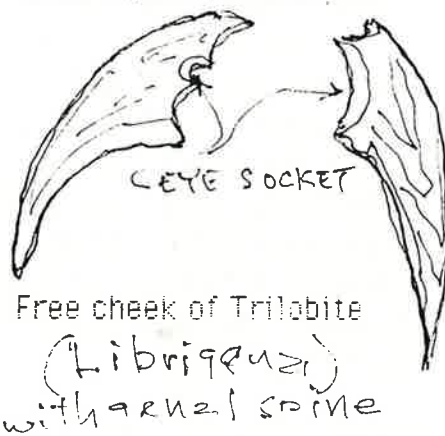
Spirifer shell with bryozoan
Reptaria attached



Inarticulate brachiopod
Craniella on Brachiopod



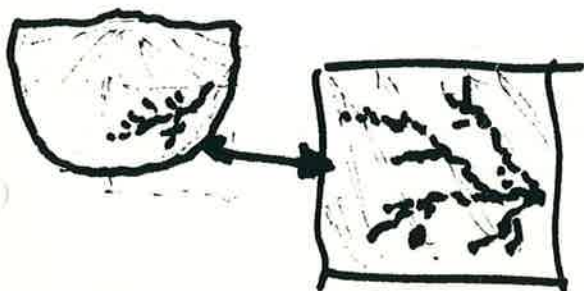
Hypostoma of trilobite



Free cheek of Trilobite
(Librigena)
with genal spine



Free cheek of
Librigena
with genal
spine



Fiederella on Chonetes
from Silica shale

From the OCTOBER 1989 MWF NEWSLETTER

HOW GLACIERS MOVE
by Chris Peychal

There are two kinds of processes involved in glacial movement - basal sliding and internal deformation. Basal sliding is the movement of the glacier over its bed under the pull of gravity. It requires a thin film of water under the glacier. The water, provided by heat from the friction of the sliding ice or even from the earth, serves as a lubricant and reduces the friction of the ice against the bedrock.

Another ingredient of basal sliding is regelation. This process enables the ice to bypass small obstructions. For example, when the ice encounters a pebble in its bed, the increased pressure between the ice and the pebble lowers the melting temperature of the ice. The ice melts, and the water flows around the pebble where the pressure is removed. The water freezes again and continues to slide along as ice.

Internal deformation is the second principle movement of glaciers. It is far more complex than basal sliding. Until the 1940's, researchers thought that glacial ice moved like an extremely stiff liquid. During the next few years, laboratory tests were performed that confirmed that this process of deformation did occur in glacial ice. This process is often called creep.

The atoms of ice, under the extreme pressure of the ice above it, rearrange themselves into layers of atoms parallel to the surface of the glacier. These layers begin to glide over one another. This movement of the layers of atoms within each ice crystal is called internal deformation.

Wisconsin Geological Society
Milwaukee, WI
Junior Article (11-17)
First Place - MWF 1989
Seventh Place - AFMS 1989



Kathy and Catherine at our "89" club show.



Bob Miller's award winning obsidian carving.



Clifford Fowler and Bob and Margaret Heinek prepare to enter the Field Museum on our recent trip.

Wasn't that a great field trip we had Sunday the 12th? I never tire of visiting the Field Museum and the Lizzadro Museum of Lapidary Art. We even had the same bus driver who took us to Chicago and Elmhurst before, Larry Kauffman.

During 1987 an article was written for the American Federation Newsletter. I felt our club members would enjoy reading it and would get more insight on how we are involved.
- Kathy Miller

WHAT IS THE "AMERICAN FEDERATION"?

By Diane Dare, AFMS Executive Vice-President

The American Federation of Mineralogical Societies was conceived in 1941 when Dr. H.C. Dake suggested a nation-wide Federation to coordinate activities of the Regional Groups then in existence, to extend and enlarge their activities. The war delayed action until 1946, when Dr. Richard Pearl invited the four Regional Federations to each send two delegates to a meeting in Salt Lake City in June 1947. The purpose - to unite the Mineralogical and Lapidary societies throughout the United States. Those Regional Federations were California (formed in 1935), Northwest (1938), Midwest (1940), and Rocky Mountain (1941).

The Articles of Incorporation state the purpose of the AFMS: "To promote popular interest and education in the various earth sciences, and in particular the subjects of geology, mineralogy, paleontology, lapidary and other related subjects, and to sponsor and provide means of coordinating the work and efforts of all persons and groups interested therein; to sponsor and encourage the formation and international development of societies and regional federations and by and through such means to strive toward greater international goodwill and fellowship".

Now, forty years later, the goal of AFMS is the same as in 1947, to unite the earth science clubs throughout the United States and to coordinate activities.

Today the AFMS has six members, the six Regional Federations (Eastern was formed in 1950, South Central/Texas in 1953). There are six officers, one from each Regional

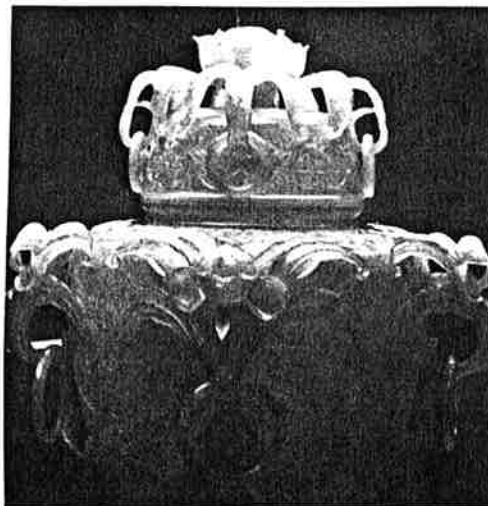
Federation, and twelve Directors, two from each Regional Federation.

Most AFMS Committees include a member from each Regional Federation. These committees include Club Publications, Conservation and Legislation, Public Relations, Safety, Uniform Rules, Education Through Sharing, and many more. The Chairmen provide assistance, encourage communication and awareness, promote activities such as workshops and contests, among the Regional Federations. Upon request such help may also be given to an individual club or club member.

You are a member of your club. Your club is a member of a Regional Federation. The Regional Federation is a member of the AFMS. You as an individual are not a member but you are affiliated with AFMS through your Regional Federation and your club. By taking an active part in your club, you can have an impact nationally on our hobby activities.

You pay dues of 25¢ a year to your club for AFMS affiliation. No AFMS Officer, Director or Chairman receives any salary. They are reimbursed postage and other expense as the AFMS budget allows. They donate not only a lot of time, but often a lot of personal expense to help keep the Earth Science hobby alive and thriving.

What is the American Federation?
It is YOU, and YOUR CLUB.



My favorite piece at the Lizzadro has to be this white nephrite vase with walls carved to 1/16th of an inch. Incredible!!!